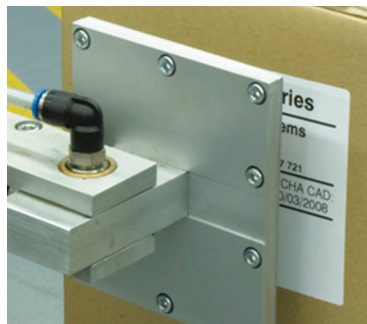
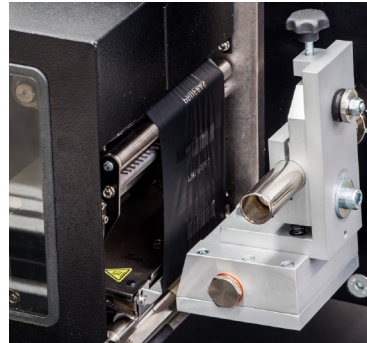




Print & Apply Systems



- ✓ Automatic Print & Apply Real Time Labeling Systems, for any group packaging (cases, packs, trays, bags, etc.).
- ✓ Top, side, front, rear, corner and double side
- ✓ Speed up to 90 labels/min
- ✓ Main frame made in anodized aluminium
- ✓ Technologically designed to meet the most exigent requirements and highest production volumes.
- ✓ Compact, solid, reliable and compatible with any OEM print engine on the market.
- ✓ Meets GS1 global standards of codification and traceability with ANSI barcode printing and grade A and B in GTIN codes

APL 3500 series

Print & Apply Systems

“Technologically designed to meet the most exigent requirements on real time labeling in the production line”



APL3500 Series Automatic Real-Time Labeling Systems, have been developed to meet the most strict requirements in terms of reliability, robustness and compatibility with industrial standards, established by the GS1 International for packaging:

- ✓ Top
- ✓ Side
- ✓ Front
- ✓ Rear
- ✓ Corner
- ✓ Double side

Technologically designed to meet the most exigent production line speed and volume requirements, providing precise labeling. **APL 3500 Series** can print and apply labels with variable data, at speed up to 60 cases/minute.

APL 3500 Series of easy installation and integration into any production line. Wide connectivity range allows connect it to any automatic device on the line, manage and transmit data to or from any ERP, MES, WMS or DBMS using UBS Designer® message editor and UBS Labman® Software.

APL 3500 Series meets the GS1 global standards for codification and traceability with ANSI barcode printing and grade A and B in GTIN codes.

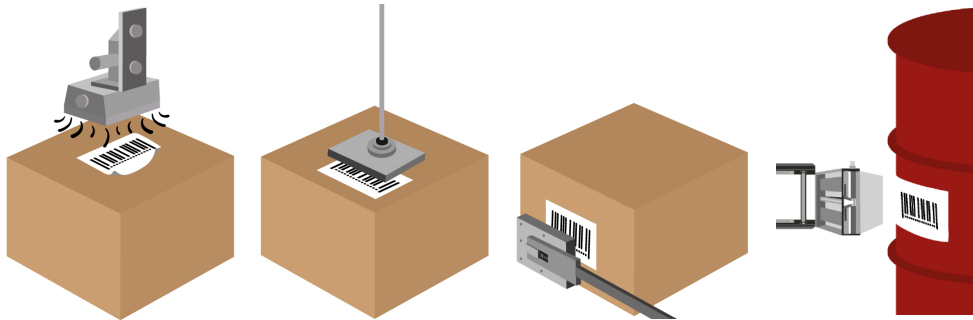


APL 3500 series

Print & Apply Systems
High speed &
High production volume

Technical Features

PRINT ENGINE	ZEBRA, HONEYWELL, SATO...
PRINTING RESOLUTION	From 203 up to 300 dpi (depending on print engine and printing speed)
LABEL ROLL	Max. diameter.: up to 300 mm / 11.8"
RIBBON ROLL	Max. Length: 600 m / 1.968 ft (depending on print engine specifications)
LABELING SPEED	Up to 90 labels/min (depending on print engine, label and packaging dimensions)
INTERFACE	Ethernet, USB, Wifi, RS232 (depending on print engine specifications)
DISPLAY	3.5" Touch Screen
POWER SUPPLY	110 / 240 VAC, 50 / 60 Hz
ENVIRONMENT	From + 5°C up to 40°C
HUMIDITY	Between 20% - 85% non-condensing



The right choice



USAAPL350N/170601



United Barcode Systems

Labeling, Coding & Marking

www.ubscore.com

APL 3500 series

Print & Apply Systems

